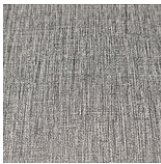




FURNITURE CONCEPTS

Mindful Design Solutions

AMATA BARSTOOLS: BM-10501



Charcoal upholstery



BM-10501-DW-CC

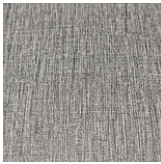
Driftwood finish



BM-10501-DW-LM



Light Moss upholstery



Charcoal upholstery



BM-10501-NT-CC

Natural Clear Coat finish



BM-10501-NT-LM



Light Moss upholstery



- 1.2mm metal frame with faux natural clear coat or driftwood wood grain finish
- Upholstered bucket seat in choice of charcoal or light moss
- Stackable: No
- Non-marring poly glides
- For indoor use only
- Overall Weight: 23 lbs (Bucket Weight: 11 lbs + Frame Weight: 12 lbs)

