

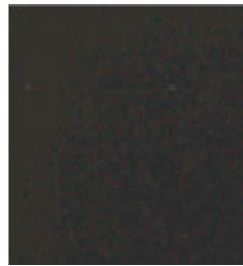


## **Bulldog Chair and Barstool**

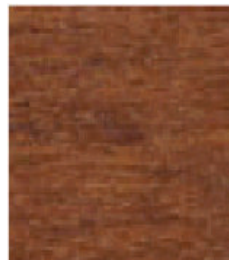
### **Wood Finishes**



**Amethyst  
243-PUR**



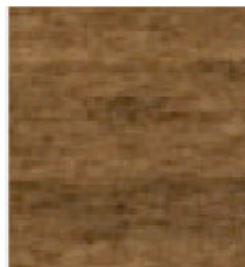
**Black  
242-BLK**



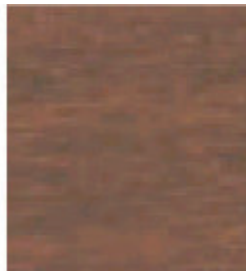
**Chestnut  
314-SDW**



**Shocking Red  
255-HYR**



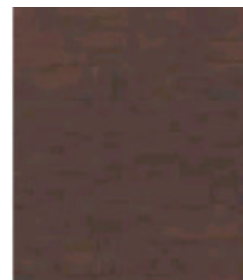
**Coffee  
226-SBC**



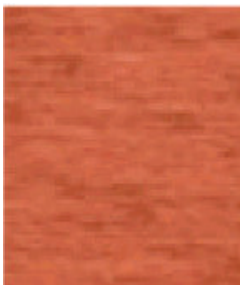
**Heritage Walnut  
312-HER**



**Mahogany  
252-MAH**



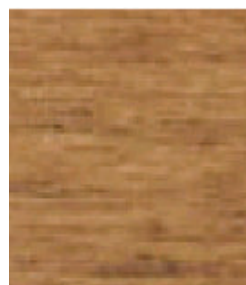
**Mocha  
292-TDW**



**Terracotta  
315-TFP**



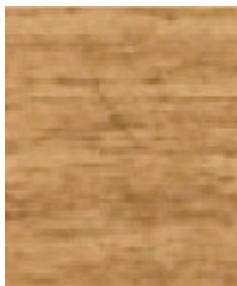
**Toffee  
286-SRO**



**Walnut  
262-WAL**



**Natural  
222-NAT**



**Oak  
232-Oak**



**Pecan  
302-ORG**



**Teak  
282-TEK**



## **Bulldog Chair and Barstool**

### **Description**

The name "Bulldog" represents the sturdy nature of this seating line that includes a side chair, armchair, barstool, backless barstool and matching benches. The side rails are extra thick to support the weight of people climbing up and leaning onto the chair next to them. The back slats are raised from the seat to allow for easy cleaning. Upholstered seats as well as solid wood seats are available. The wood seats are sculpted at the factory to ensure a comfortable sitting position.

### **Dimensions: Chair**

Height	35"	89 cm
Depth	19"	48 cm
Seat Width	18"	45 cm
Seat Depth	16.5"	42 cm
Seat Height	18"	45 cm
Chair Weight	17.5 lbs	8 kg
Carton Weight		
with 1 chair	28 lbs	13 kg
with 2 chairs	45 lbs	21 kg
Carton Size for 1 Chair		
18.25" x 22.25" x 37.5"		
46 cm x 56 cm x 95 cm		
Carton Volume for 1 Chair		
8.8 cubic feet		
Carton Size for 2 Chairs		
18.25" x 24.5" x 37.5"		
46 cm x 62 cm x 95 cm		
Carton Volume for 2 Chairs		
9.7 cubic feet		
<i>Note: Packing of chairs is based on the shipping method.</i>		

The Bulldog chair is non-stacking.

### **Dimensions: Barstool**

Height	47"	119 cm
Depth	19"	48 cm
Seat Width	18"	45 cm
Seat Depth	16.5"	42 cm
Seat Height	30"	76 cm
Stool Weight	24 lbs	11 kg

Carton Weight		
with 1 stool	34 lbs	15.5 kg
Carton Size for 1 Barstool		
18.5" x 20" x 48"		
46.3 cm x 50.8 cm x 121.8 cm		
Volume	10.3 cubic feet	

*Note:* The barstool is available in custom seat heights ranging from 24" (61 cm) to 30" (76 cm).

**Standard kickplates** are brass. Chrome kickplates are available upon request at the same price.

### **Fabric for upholstered seats**

COM (Customer's Own Material) fabric required (chair and barstool): .35 yd (.33 m)

*Note:* This is the estimated amount based on 54" (137 cm) wide material. The actual amount required may vary depending on special pattern matching and the width of the material.

Stock fabric: Black vinyl is available as a stock fabric.

Cushion Foam: High density 1.5" (3.8 cm) thick on seat

### **Wood**

*Species:* 100% Solid European Beech Hardwood

### **Construction**

*Joints:* Mortise and tenon.

Glued with high solids glue and reinforced with 18 gauge nails, corner blocks and low root woodscrews.

### **Stain Colors**

A wide range of standard stain colors is available as well as custom color matching. (A surcharge will apply to custom colors.)

### **9-Step Finishing Process**

1. The bare wood of the assembled chair is thoroughly sanded using 120 grit paper.
2. One coat of stain is sprayed onto the entire chair – including the underside of the seat.
3. The stain is handwiped to ensure an even color and maximum penetration into the wood.
4. The chair is inspected and any necessary adjustments made.
5. One coat of a catalyzed sealer is sprayed onto all wood parts to completely seal the wood – including the underside of the seat.
6. Once dry, the sealer is sanded using 320 grit paper.
7. A final sanding is done using Scotch Brite pads to remove any sanding marks.
8. A catalyzed lacquer is sprayed on. This lacquer is very durable and will stand up in a commercial environment.
9. A final inspection is performed prior to packaging to ensure a high level of quality control.

*Note:* Specifications are subject to change without notice.