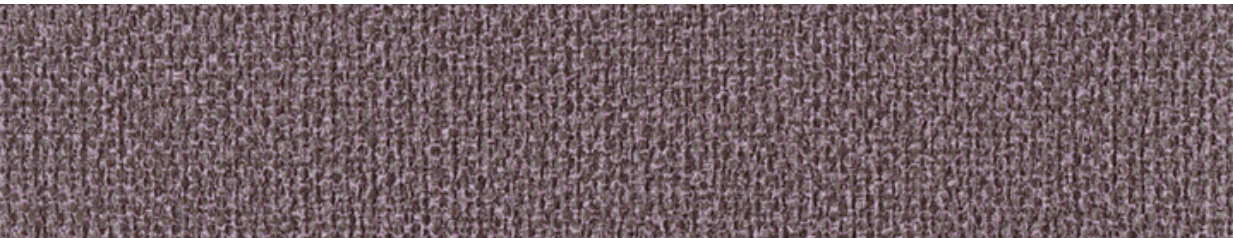


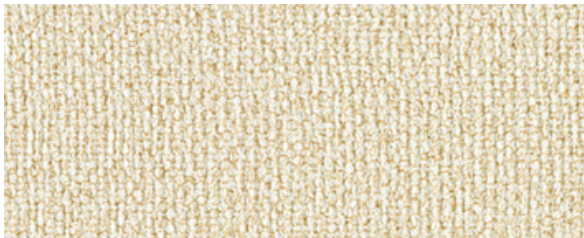
BOOK CLUB



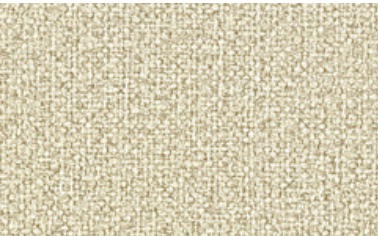
Amethyst



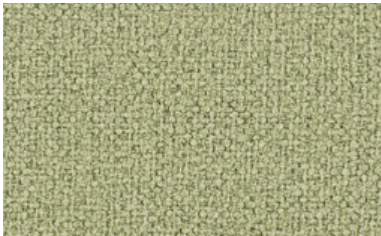
Smoke



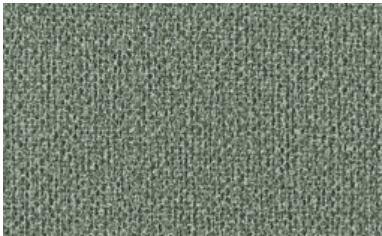
Cashmere



Wheat



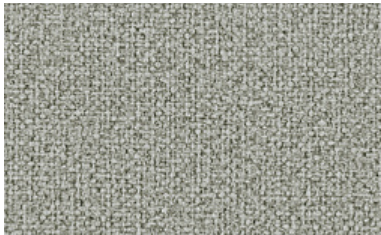
Moss



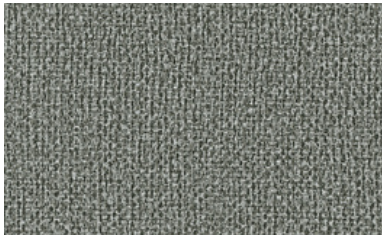
Forest



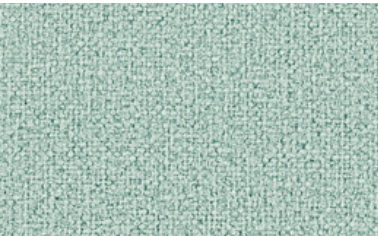
Fog



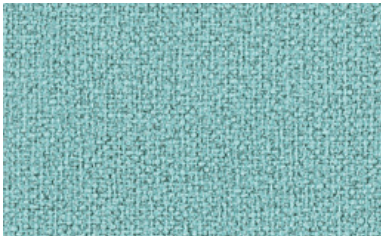
Granite



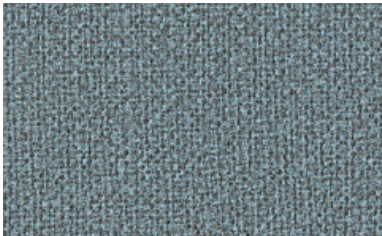
Ebony



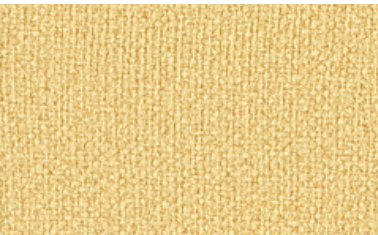
Pool



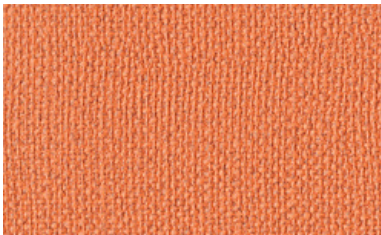
Bahama



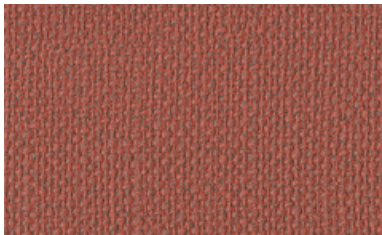
Blue Jay



Sun



Tangerine



Cardinal

Pattern Detail and Specifications

Specifications:

Content:	100% Vinyl
Backing:	70% Polyester, 30% Cotton
Finish:	i-Clean®
Direction:	Up the Roll
Weight:	37.62 oz. / lin. yd.
Width:	54 inches

Flammability Passes:

California Tech. Bulletin #117-2013	MVSS 302
UFAC Class 1	
NFPA 260 Class 1	

Performance:

Abrasion:	Heavy Duty – Exceeds 145,000 cycles (Wyzenbeek – Wire Screen Abradant) (ASTM D4157)
Light Fastness:	Class 4/200 hrs. min. (AATCC16A)
Color Fastness:	Class 4 (ASTM D3597, AATCC 8) Wet Class 4 (ASTM D3597, AATCC 8) Dry
Physical Properties:	138 lbs. warp, 147 lbs. weft (ASTM D5034) Breaking Strength 69 lbs. warp, 42 lbs. weft (ASTM D4034) Seam Slippage 50,000 cycles (CFFA 10) Flex Resistance Pass (CFFA 6a) Cold Crack
Made In:	China

Care & Cleanability:

Cleaning code **W** - Spot clean only with water-based upholstery shampoo or foam upholstery cleaner. Pretest a small, inconspicuous area before proceeding. Do not over wet. Do not use solvents to spot clean. Cushion covers should not be removed and laundered. When cleaning a spill, blot immediately to remove the spilled material. Evenly clean the entire panel in a seam-to-seam fashion. Do not clean just the spots or stains. When an overall soiled condition has been reached and professional care is required, contact an IICRC certified firm (www.iicrc.org).