

LINETTE



Steel



Platinum



Glacier



Waterscape



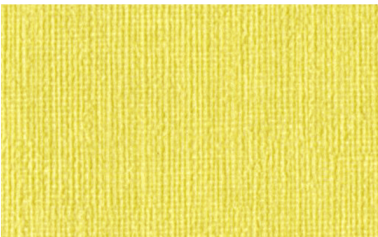
Ash



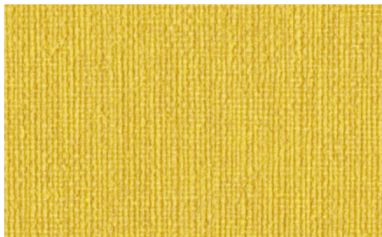
Denim



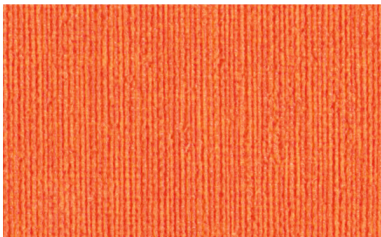
Peacock



Moss



Mustard



Flame



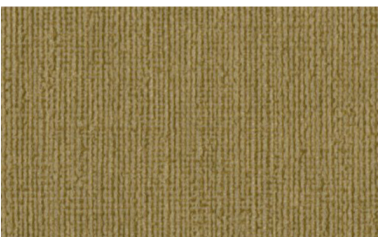
Frost



Stone



Glaze



Toffee



Cola



Black

Pattern Detail and Specifications

Specifications:

Content:	100% Vinyl
Backing:	100% Polyester
Finish:	Antimicrobial, i-Clean®
Repeat:	N/A
Weight:	41.3 oz. / lin. yd.
Width:	54 inches

Flammability Passes:

California Tech. Bulletin #117-2013	
UFAC Class 1	MVSS 302
NFPA 260 Class 1	

Performance:

Abrasion:	Heavy Duty – Exceeds 100,000 cycles (Wyzenbeek – Wire Screen Abradant) (ASTM D4157)
Light Fastness:	Class 4/200 hrs. min. (AATCC16A)
Color Fastness:	Class 4 (ASTM D3597, AATCC 8) Wet Class 4 (ASTM D3597, AATCC 8) Dry
Physical Properties:	50,000 Cycles (CFFA 10) Flex Resistance 137 lbs. warp, 143 lbs. weft (ASTM D5034) Breaking Strength 67 lbs. warp, 69 lbs. weft (ASTM D4034) Seam Slippage Pass (CFFA 6a) Cold Crack
Recommended Use:	Upholstery
Made In:	China

Care & Cleanability:

Cleaning code **W** - Spot clean only with water-based upholstery shampoo or foam upholstery cleaner. Pretest a small, inconspicuous area before proceeding. Do not over wet. Do not use solvents to spot clean. Cushion covers should not be removed and laundered. When cleaning a spill, blot immediately to remove the spilled material. Evenly clean the entire panel in a seam-to-seam fashion. Do not clean just the spots or stains. When an overall soiled condition has been reached and professional care is required, contact an IICRC certified firm (www.iicrc.org).