

PLOT LINE



Icicle



Neutral



Steel



Grass



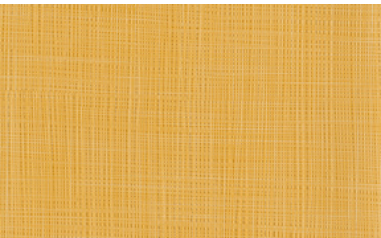
Kingman



Plum



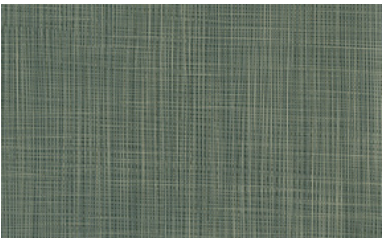
Wheat



Sherbert



Cauldron



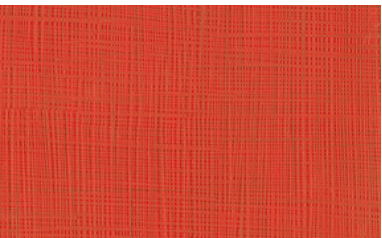
Blarney



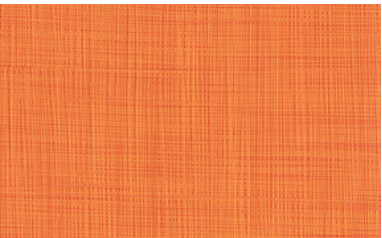
Navy



Shale



Red Hot



Orange

Pattern Detail and Specifications

Specifications:

Content:	100% Vinyl
Backing:	70% Polyester, 30% Cotton
Finish:	i-Clean®, Antimicrobial
Direction:	Up the Roll
Weight:	35.2 oz. / lin. yd.
Width:	54 inches

Flammability Passes:

California Tech. Bulletin #117-2013	
UFAC Class 1	MVSS 302
NFPA 260 Class 1	

Performance:

Abrasion:	Heavy Duty – Exceeds 200,000 cycles (Wyzenbeek – Wire Screen Abradant) (ASTM D4157)
Light Fastness:	Class 4/200 hrs. min. (AATCC16A)
Color Fastness:	Class 4 (ASTM D3597, AATCC 8) Wet Class 4 (ASTM D3597, AATCC 8) Dry
Physical Properties:	135 lbs. warp, 157 lbs. weft (ASTM D5034) Breaking Strength 81 lbs. warp, 60 lbs. weft (ASTM D4034) Seam Slippage 50,000 cycles (CFFA 10) Flex Resistance Pass (CFFA 6a) Cold Crack
Made In:	China

Care & Cleanability:

Cleaning code **W** - Spot clean only with water-based upholstery shampoo or foam upholstery cleaner. Pretest a small, inconspicuous area before proceeding. Do not over wet. Do not use solvents to spot clean. Cushion covers should not be removed and laundered. When cleaning a spill, blot immediately to remove the spilled material. Evenly clean the entire panel in a seam-to-seam fashion. Do not clean just the spots or stains. When an overall soiled condition has been reached and professional care is required, contact an IICRC certified firm (www.iicrc.org).