

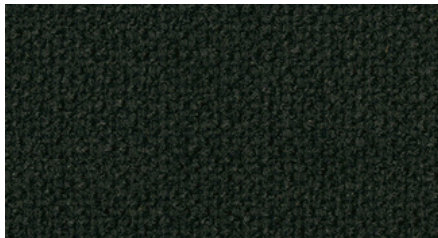
PURL



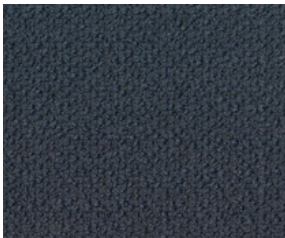
Icicle



Slate Gray



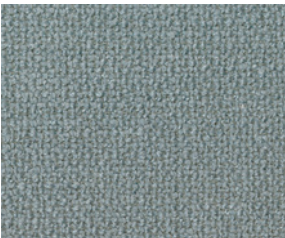
Raven



Nautical



Azure



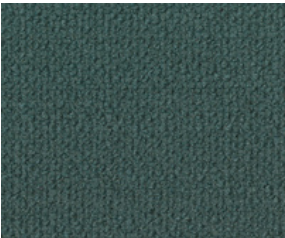
Stream



Breeze



Jade



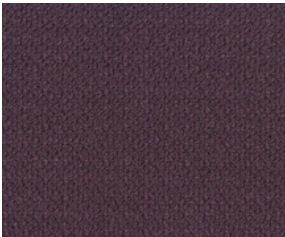
Verdite



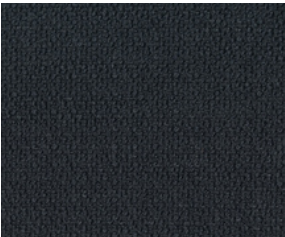
Shadow



Eclipse



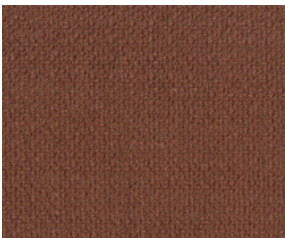
Malbec



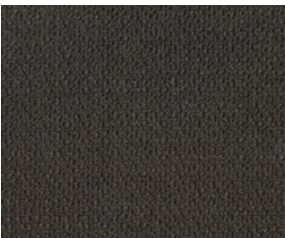
Dark Blue



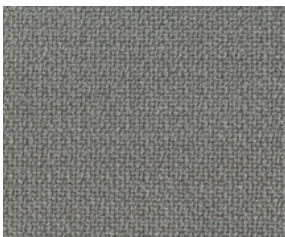
Teracotta



Spice



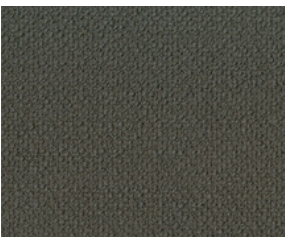
Root



Wool



Hearthstone



Cliff

Pattern Detail and Specifications

Specifications:

Content:	80% Polyester, 20% Acrylic
Backing:	Synthetic Latex Blend
Finish:	i-Clean®
Direction:	Up the Roll
Weight:	24.4 oz. / lin. yd.
Width:	54 inches

Flammability Passes:

California Tech. Bulletin #117-2013	ASTM E84
UFAC Class 1	
NFPA 260 Class 1	

Performance:

Abrasion:	Heavy Duty – 100,000 cycles (Wyzenbeek – Cotton Duck Abradant) (ASTM D4157)
Light Fastness:	Class 4/40 hrs. min. (AATCC16A)
Color Fastness:	Class 3 (ASTM D3597, AATCC 8) Wet Class 4 (ASTM D3597, AATCC 8) Dry
Physical Properties:	Class 3 (ASTM D3511) Brush Pill 229 lbs. warp, 188 lbs. weft (ASTM D5034) Breaking Strength 33 lbs. warp, 54 lbs. weft (ASTM D4034) Seam Slippage
Made In:	China

Care & Cleanability:

Cleaning code **W** - Spot clean only with water-based upholstery shampoo or foam upholstery cleaner. Pretest a small, inconspicuous area before proceeding. Do not over wet. Do not use solvents to spot clean. Cushion covers should not be removed and laundered. When cleaning a spill, blot immediately to remove the spilled material. Evenly clean the entire panel in a seam-to-seam fashion. Do not clean just the spots or stains. When an overall soiled condition has been reached and professional care is required, contact an IICRC certified firm (www.iicrc.org).